

ABS LIFTING STATION SANIMAT 1000 S-1



Faecal Lifting Station for the removal of wastewater and sewage from areas below sewer level. Ideal for effective dewatering of houses with one or two living units and for new buildings or renovation of old building.

Applications

In the case of new buildings or when carrying out installations in cellars it is often the case that effluent from WCs, showers or baths cannot flow directly into the sewer due to the fact that the outlets are located below the backwash level. In these cases it is necessary to install a faecal lifting station (DIN/EN 12056).

Medium pumped

Clear water, wastewater, sewage and faecal effluent containing both solid and fibrous matter.

Toilet-direct connection

(180 mm EURO-WC, 220 mm Wall-WC).

The collection tank may be located at floor level or sunken as circumstances require it. Further connections for wastewater sources from the side or from the top.

Construction

Synthetic tank

Corrosion resistant, gas and odour-tight in accordance with DIN/EN 12050-1. Three main inlets DN 100, three additional connection ports DN 70, horizontal and vertical, plus one DN 40 port connection for hand operated membrane pump G 1½" and vent line DN 70.

Motor

Three-phase versions 400 V3~ or single-phase version 230 V~, 50 Hz, 2-Pole (2900 min⁻¹), Insulation Class F, Protection Type IP 68.

Bearings

The rotor shaft is supported in maintenance-free lubricated-for-life ball-bearings.

Shaft sealing

Motor and medium side by means of a double lip seal.

Discharge Connections

Sleeve 4" (Diameter 110 mm bore) via DN80 flange.

Contrablock system

Consisting of a spiral bottom plate with waved inlet shearing edge and open ABS channel type impeller preventing blockage of the impeller where there is a high proportion of solid or fibrous matter present.

Space-saving

The fact that the discharge and vent lines are vertical means that it is possible to have a simple, economical installation.

Control Unit

Control unit, with automatic level control, and potential-free fault indication and alarm-horn (pre-equipped for mains independent alarm).

Control Unit

Control unit is mounted above flood level.

Medium Temperature

40° C, short term to 60° C (max. 5 min)



- Control unit with automatic level control, potential-free fault indication and alarm-horn
- Flexible connection into discharge line with flange DN 80 and sleeve 4"
- Robust corrosion resistant synthetic tank of compact design
- Easily transportable, can pass through a standard door opening
- Flood-proof ABS submersible pumps with Contrablock System
- Seven inlet ports, at different heights and a range of diameters, both horizontal and vertical
- Integrated non-return valve system
- No sump required
- Reduces installation cost
- Odour proof

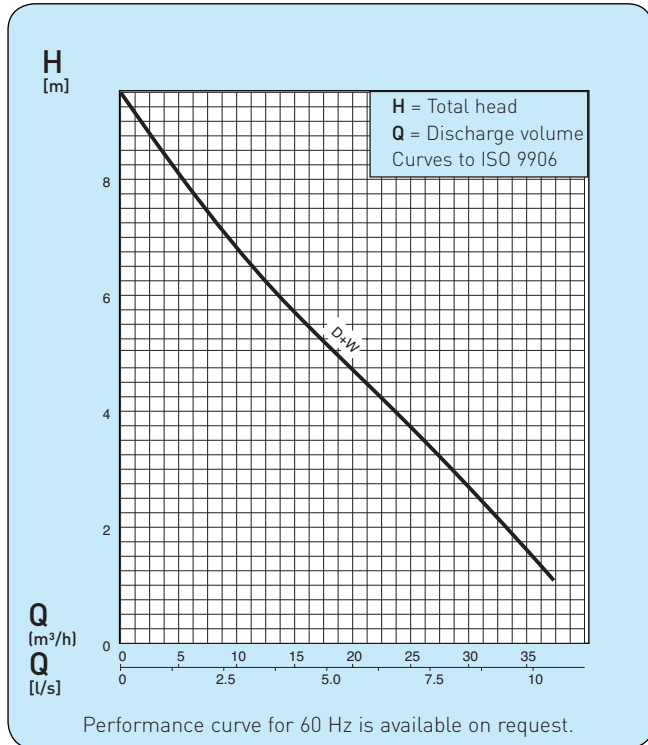
ABS LIFTING STATION SANIMAT 1000 S-1

Technical Data

	Inlet port		Vent port	Discharge connection	Motor power*		Speed at 50 Hz	Rated voltage and rated current		Cable [‡] length	Weight **
	DN	DN	DN	DN	P ₁ kW	P ₂ kW	min ⁻¹	V	A	m	kg
Sanimat 1000 S-1/W	100 (3 x)	70 (3 x)	70	Sleeve 4" DN 100	1.70	1.20	2900	220-240 ~	5.7	4+1.5	50
Sanimat 1000 S-1/D	100 (3 x)	70 (3 x)	70	Sleeve 4" DN 100	1.70	1.20	2900	400 3 ~	3.3	4+1.5	50

* P₁ = Power taken from mains; P₂ = Power at motor shaft ‡ Tank Control Unit 4 m, Control Unit 1.5 m ** Additional weight of the hand membrane pump = 13 kg
 Supplied as Standard: Tank with pump, automatic level control, and control box, non-return valve, 4" sleeve and flange.

Performance Curve 50 Hz

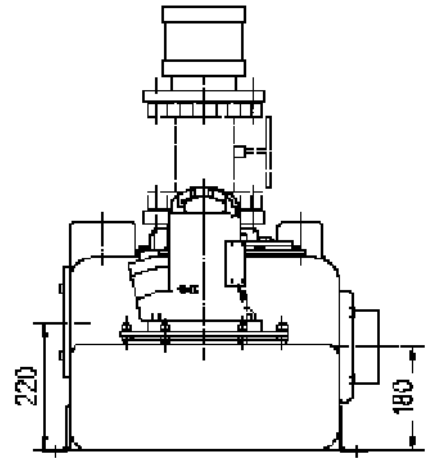
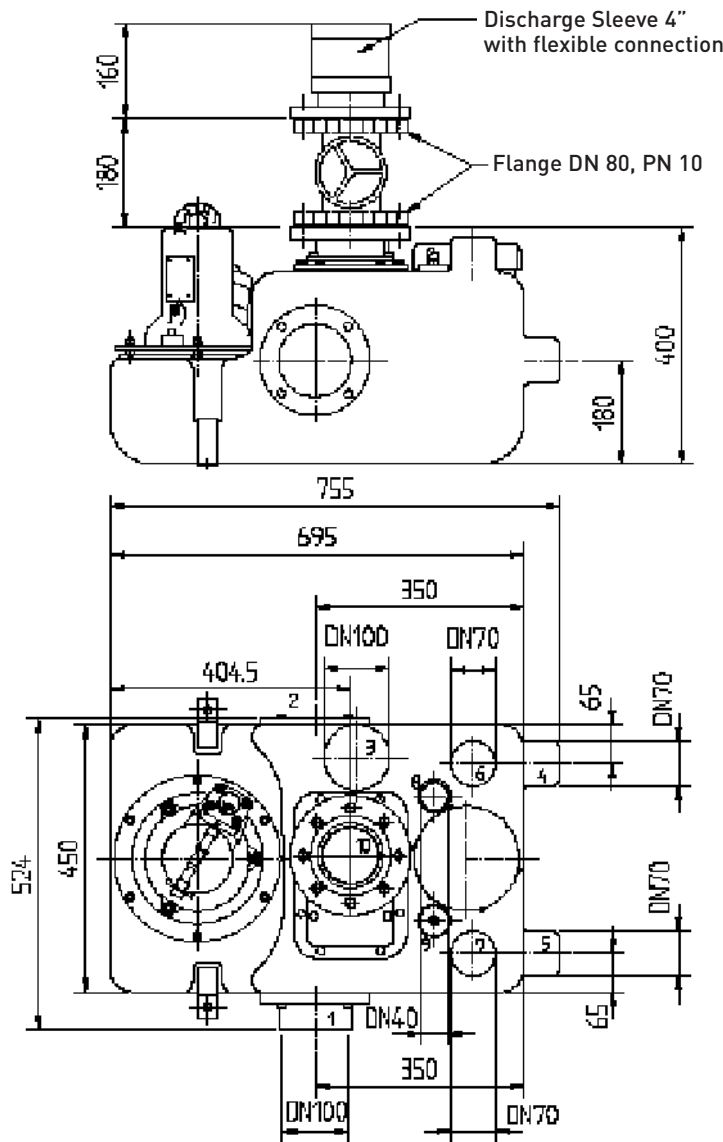


Materials

Tank _____ Polyethylene
 Motor housing _____ Cast Iron EN-GJL-250
 Rotor Shaft _____ Stainless Steel 1.4021 (AISI 420)
 Volute _____ Polyethylene
 Impeller _____ Cast Iron EN-GJL-250

Dimensions

mm

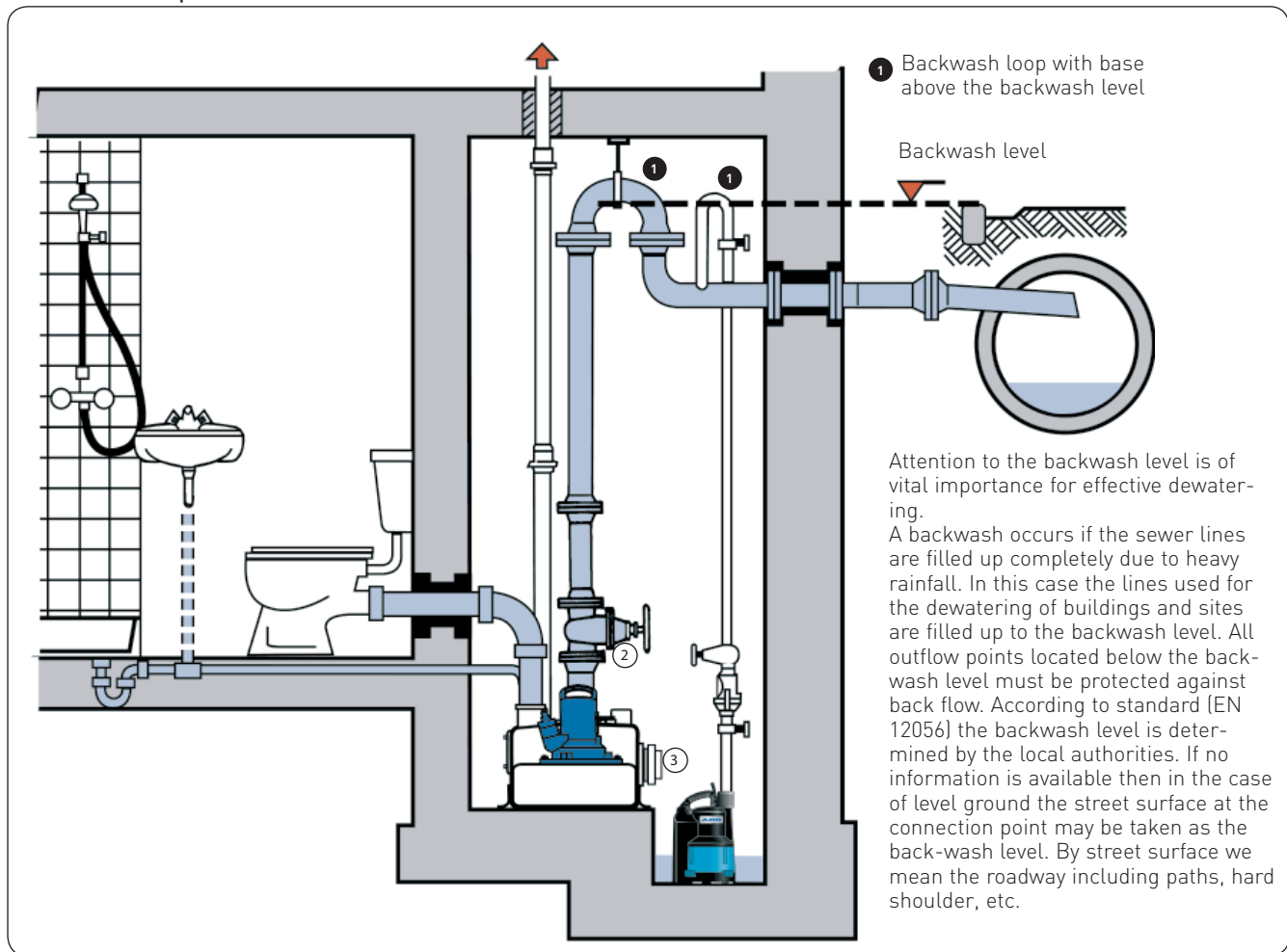


- Connections**
- 1 DN 100 INFLOW
 - 2 DN 100 INFLOW
 - 3 DN 100 INFLOW
 - 4 DN 100 INFLOW
 - 5 DN 70 INFLOW
 - 6 DN 70 INFLOW
 - 7 DN 70 VENT or INFLOW
 - 8 DN 70 VENT or INFLOW
 - 9 DN 40 INFLOW or HANDMEMBRANE PUMP
 - 10 DN 40 LEVEL CONTROL
- SLEEVE 4" DISCHARGE LINE

Rooms for sewage lifting stations must be large enough that a working area of at least 0.6 m width and height is available around all parts which have to be operated or maintained. A pump sump should be provided for dewatering of the room itself.

ABS LIFTING STATION SANIMAT 1000 S-1

Installation Example



Accessories

Description (Materials)	Size	Part No.
<input type="checkbox"/> Discharge side		
1 Hand membrane pump with built-in non return valve for separate wall fixing	G 1½"	14990028
2 Shut-off valve (EN-GJL-250) including 1 set of bolts and seal PN10	DN 80	61420500
<input type="checkbox"/> Inflow side		
3 Inflow Adapter (1 supplied as standard)	DN 100	41405002
4 Flanged sleeve E-KS transition piece DIN-flange/push-on sleeve including 1 set of bolts and 1 flat gasket for vertical inflow	DN 100	62540025
Flanged spigot (EN-GJL-250) for horizontal inflow in conjunction with shut off valve	4"/DN 100	41400594
5 Shut-off valve (EN-GJL-250) including 1 set of bolts and 1 flat gasket, flange PN 16	DN 100	61420501
<input type="checkbox"/> Electrical accessories		
Plug in alarm		16020201
NC-Battery for mains independant alarm (can be fitted into the standard control panel Sanimat 1000 S-1)		12820031

