

ERHARD Tilting-Disc Check Valves PN 16

with weight-loaded lever

Range of application: water up to 70 °C

Size DN	Pressure rating PN	Hydrost. test pressure ⁴⁾ in bars for		Max. adm. working pressure in bars at a working temperature of up to 70 °C
		body water	seat water	
150 - 1000	16	25	17,6	16

When placing the order, please specify application, flow medium, working pressure, back pressure, and working temperature.

Flanges B, DN 150 - 1000, PN 16, DI, type 21, EN 1092-2³⁾.

Materials/Equipment²⁾

Corrosion protection of body components	EKB epoxy coating, blue, RAL 5015
Body	Ductile cast iron GJS
Body seat	Austenitic CrNi steel
Valve disc DN 150 DN 200 and larger	Austenitic CrNi steel Ductile cast iron GJS / EKB
Disc facing ring	Austenitic CrNi steel
Sealing ring	Elastomer (NBR)
Valve shaft	Ferritic chrome steel
Shaft bearing bushes (maintenance-free)	Steel/tin/PTFE
Sealing of shaft bore	Elastomer (NBR)
Lever	Steel
Counterweight	Cast iron
Lever arrangement	According to print 4.109 800, fig. 1

Dimensions

Size DN	Face- to-face dim. L ⁵⁾ mm	Flange dia. D mm	Space requirement								Feet		Weight ¹⁾ kg	Volume m ³
			e ₁ mm	e ₂ mm	e ₃ mm	e ₄ mm	e ₅ mm	e ₆ mm	h ₁ mm	h ₂ mm	b mm	h ₃ mm		
150	210	285	230	210	230	-	-	-	210	150	150	145	45	0.03
200	230	340	270	245	250	20	-	-	240	155	160	175	65	0.05
250	250	400	300	280	250	45	-	-	250	145	180	205	90	0.08
300	270	455	350	325	300	70	-	-	300	180	200	230	115	0.12
350	290	520	375	350	350	95	-	-	350	200	225	270	160	0.18
400	310	580	400	375	400	118	-	-	390	230	250	295	195	0.23
450	330	640	450	410	450	142	-	-	450	260	250	325	240	0.32
500	350	715	480	445	500	165	-	-	500	290	300	360	330	0.41
600	390	840	560	515	600	215	-	-	600	350	330	425	430	0.71
700	430	910	640	600	700	263	10	-	690	400	400	460	570	0.99
800	470	1025	690	655	800	315	15	5	800	460	450	520	765	1.42
900	510	1125	750	725	900	364	30	20	890	510	550	570	1020	1.95
1000	550	1255	820	780	1000	410	40	30	990	570	600	635	1290	2.58

¹⁾ Weight without feet, net (without obligation).

²⁾ Other types and materials available on request.

³⁾ Except DN 450.

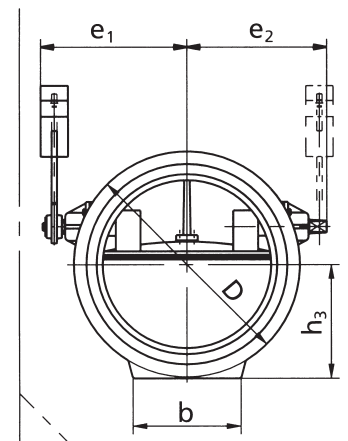
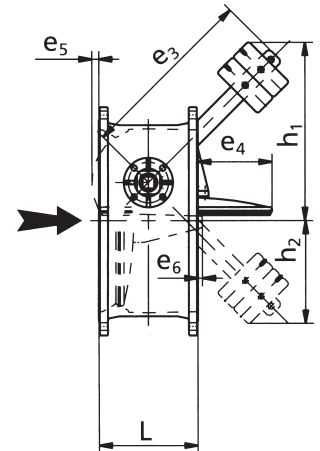
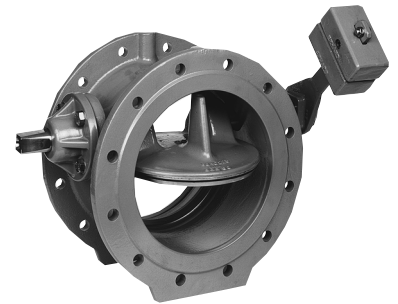
⁴⁾ According to EN 12266 and EN 1074.

⁵⁾ According to EN 558-1, FTF, basic series R14 (DIN 3202, basic series F4).

Annotations:

- ▶ For the prevention of accidents, the customer has to secure the moving range of the lever by means of a protective grating.
- ▶ ERHARD Tilting-Disc Check Valves are freely swinging, without damping effect. If due to quick flow reversal, closing shocks are to be expected, it will be necessary to use a Tilting-Disc Check Valve with hydraulic damping device. For this purpose, it is absolutely necessary to specify the corresponding back pressure.
- ▶ For vertical installation and flow from above downwards, the valve has to be equipped with weight-loaded lever on both sides. On request, we will be glad to submit a quotation for these special types.

epoxy coating
EKB
epoxy coating



Protective grating
provided by customer