

ERHARD Tilting-Disc Check Valves PN 25

with weight-loaded lever

Range of application: water up to 70 °C

Size DN	Pressure rating PN	Hydrost. test pressure ⁴⁾ in bars for		Max. adm. working pressure in bars at a working temperature of up to 70 °C
		body water	seat water	
150 - 600	25	37.5	27,5	25

When placing the order, please specify application, flow medium, working pressure, back pressure, and working temperature.

Flanges B, DN 150 - 600, PN 25, DI, type 21, EN 1092-2³⁾.

Materials/Equipment¹⁾

Corrosion protection of body components	EKB epoxy coating, blue, RAL 5015
Body	Ductile cast iron GJS
Body seat	Austenitic CrNi steel
Valve disc DN 150 DN 200 and larger	Austenitic CrNi steel Ductile cast iron GJS / EKB
Disc facing ring	Austenitic CrNi steel
Sealing ring	Elastomer (NBR)
Valve shaft	Ferritic chrome steel
Shaft bearing bushes (maintenance-free)	Steel/tin/PTFE
Sealing of shaft bore	Elastomer (NBR)
Lever	Steel
Counterweight	Cast iron
Lever arrangement	According to print 4.109 800, fig. 1

Dimensions

Size DN	Face-to-face dim. L ⁵⁾ mm	Flange dia. D mm	Space requirement						Feet		Weight ²⁾ kg	Volume m ³
			e ₁ mm	e ₂ mm	e ₃ mm	e ₄ mm	h ₁ mm	h ₂ mm	b mm	h ₃ mm		
150	210	300	230	210	230	—	210	150	150	155	48	0.04
200	230	360	270	245	250	20	240	155	160	185	70	0.06
250	250	425	300	280	250	45	250	145	180	215	100	0.09
300	270	485	350	325	300	70	300	180	200	245	130	0.13
350	290	555	375	350	350	95	350	200	225	280	180	0.20
400	310	620	410	390	400	118	390	230	250	315	220	0.26
450	330	670	460	425	450	142	450	260	250	340	270	0.32
500	350	730	480	455	500	165	500	290	300	370	360	0.41
600	390	845	560	525	600	215	600	350	330	425	470	0.71

¹⁾ Other types and materials available on request.

²⁾ Weights net (without obligation).

³⁾ Except DN 450.

⁴⁾ According to EN 12266 and EN 1074.

⁵⁾ According to EN 558-1, FTF, basic serie R14 (DIN 3202, basic serie F4).

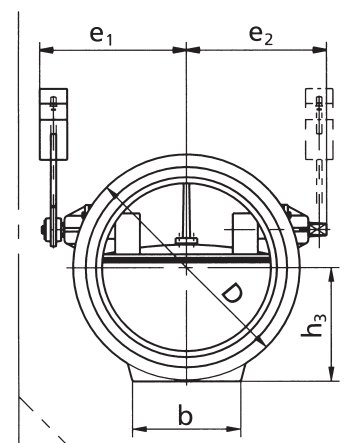
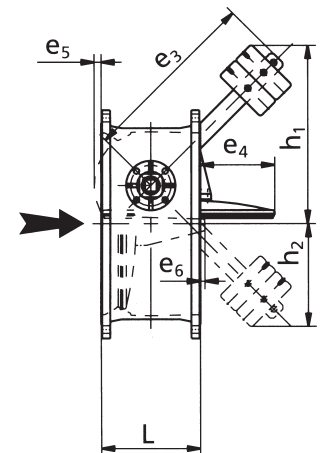
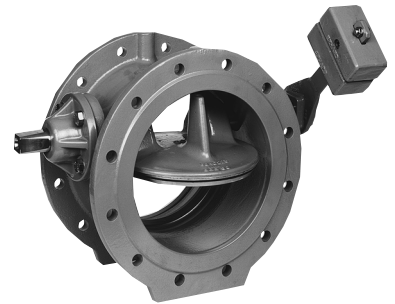
● For the prevention of accidents, the customer has to secure the moving range of the lever by means of a protective grating.

● ERHARD Tilting-Disc Check Valves are freely swinging, without damping effect. If due to quick flow reversal, closing shocks are to be expected, it will be necessary to use a Tilting-Disc Check Valve with hydraulic damping device. For this purpose, it is absolutely necessary to specify the corresponding back pressure.

● For vertical installation and flow from above downwards, the valve has to be equipped with weight-loaded lever on both sides.

On request, we will be glad to submit a quotation for these special types.

epoxy coating
EKB
epoxy coating



Protective grating provided by customer